

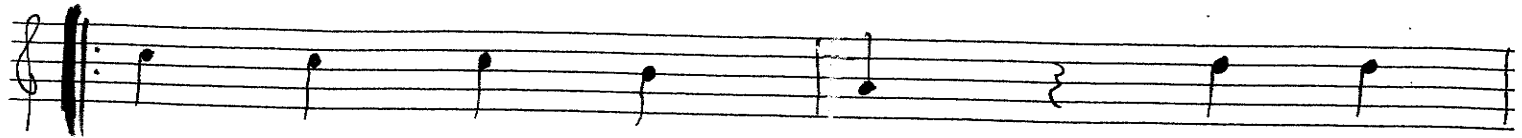
8.1 Ave Maria F. Schubert/M. Aplitz • sehr langsam • klangvoll [Sax. I (Sop.-S.)]

(2)

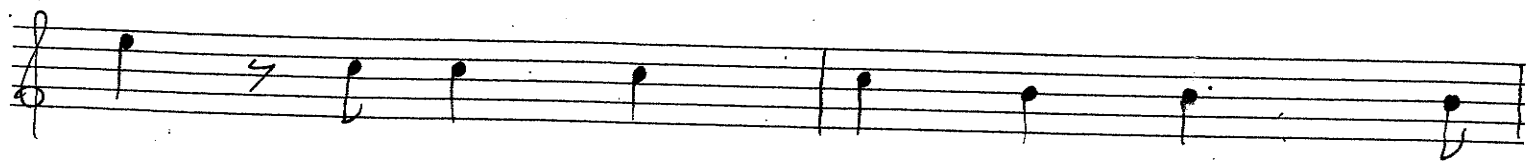


Instrumentalfassung ohne Wdh.

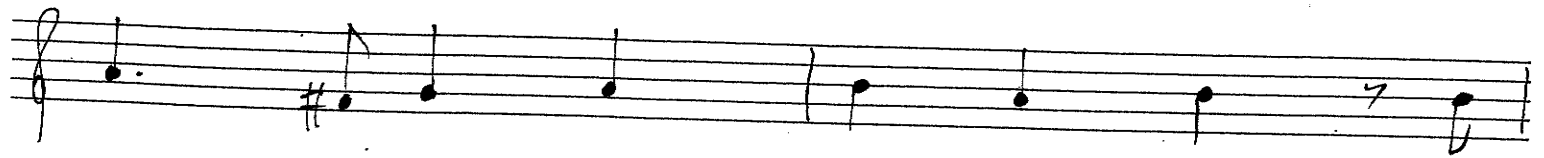
(3/16)



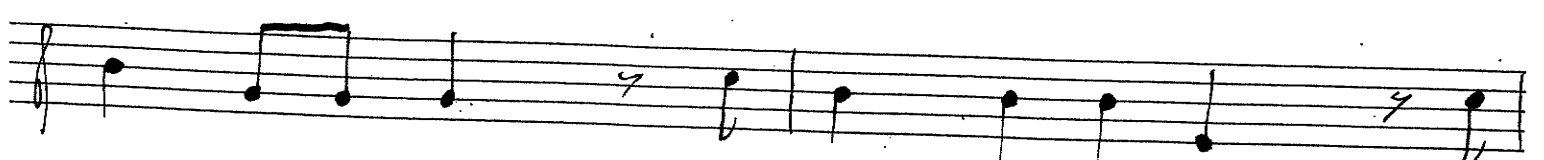
(5/18)



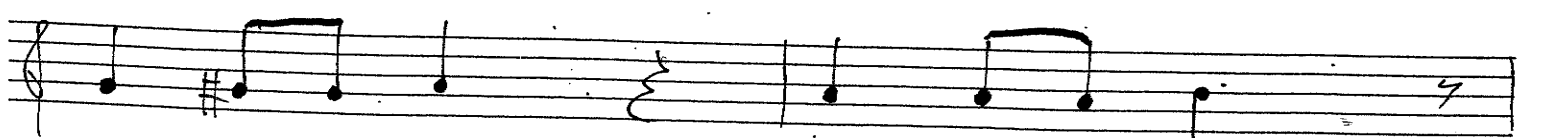
(7/20)



(9/22)

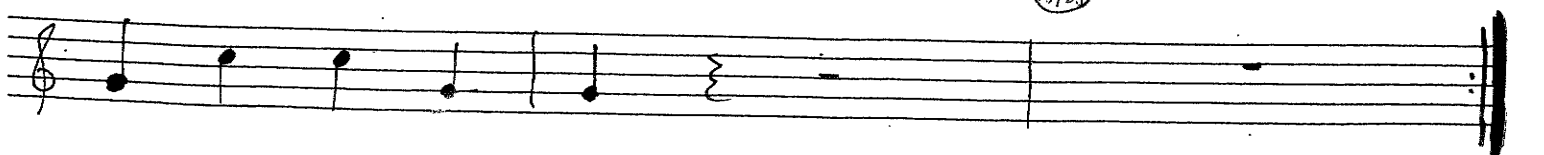


(11/24)



(13/26)

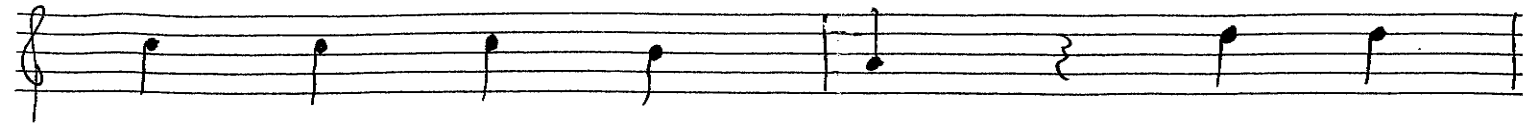
(15/28)



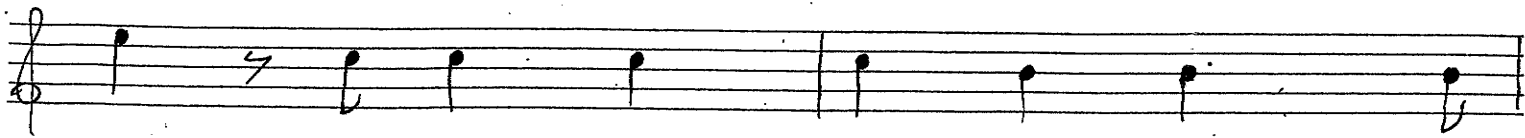
Ave Maria

[Sax. I (Sop.-S.)]

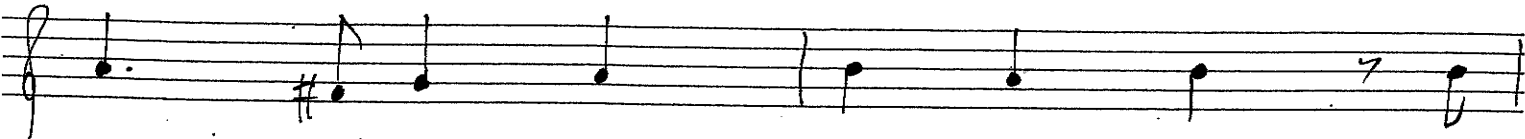
(29)



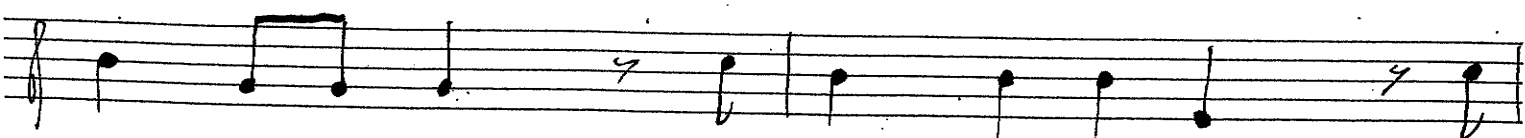
(31)



(33)



(35)

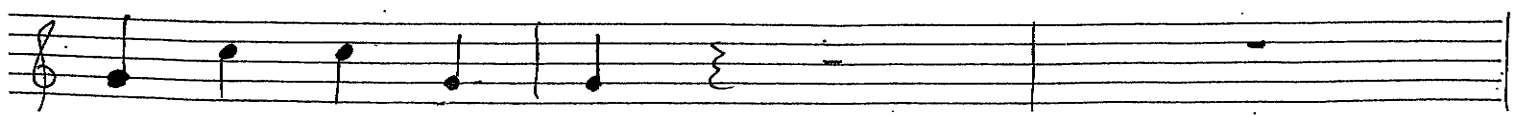


(37)

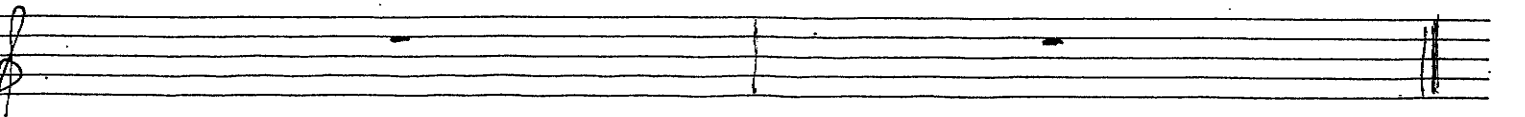


(39)

(41)



(42)



[Sax. I (Sop.-S.)]

[Sax. I (Sop.-S.)]